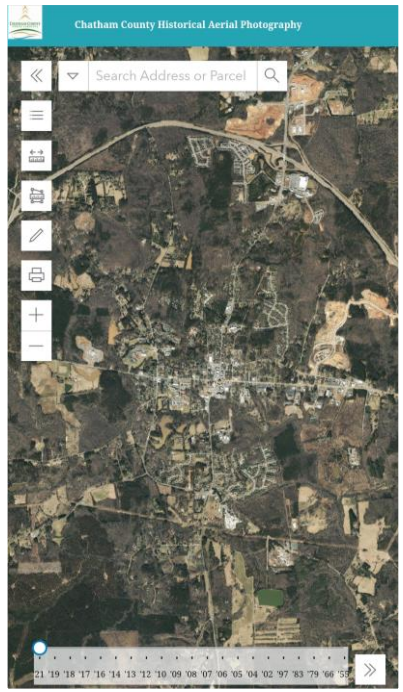
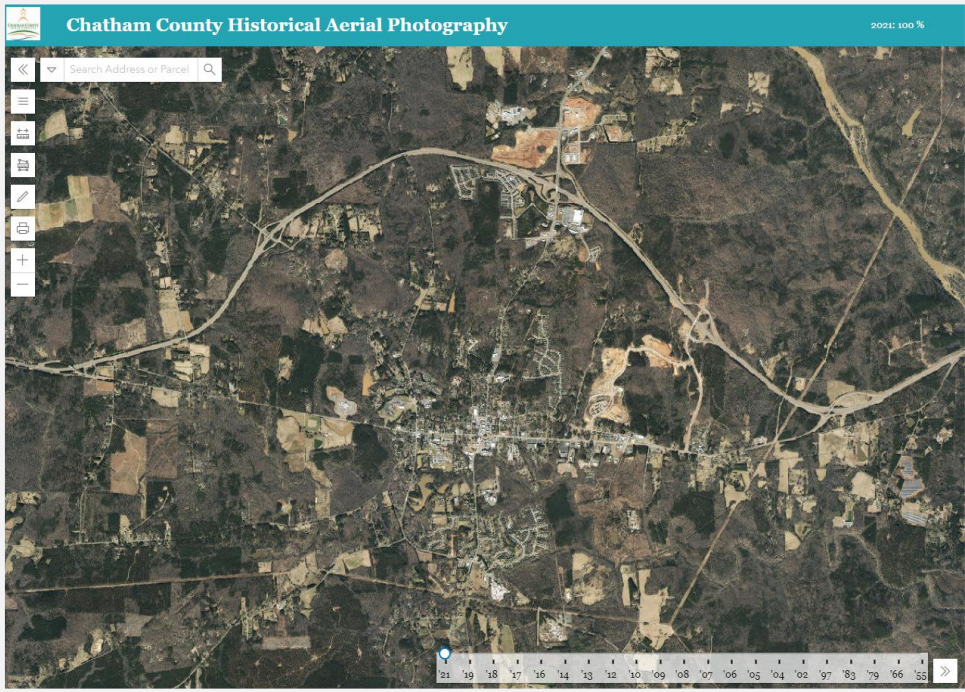


Historical Aerial Photography Application



APPLICATION USAGE GUIDE
(DRAFTED 1-24-22)



Application Purpose

The Chatham County Historical Aerial Photography application is provided to the public as a web-based tool for viewing and exporting imagery. It is equipped with an interactive slider that blends images from two years of capture to emulate change visualization. It also includes other simple widgets to provide basic mapping functionality.

Data Disclaimer:

Chatham County GIS shall not be held liable for any errors in these data. This includes errors of omission, commission, errors concerning the content of the data, and relative and positional accuracy of the data. These data cannot be construed to be a legal document. Primary sources from which these data were compiled must be consulted for verification of information contained in these data. Any resale of this data is strictly prohibited in accordance with North Carolina General Statute 132-10.



General Map Exploration Tools

The upper-left hand corner of the application contains the below “widgets.”

1) **Search:** Enter the parcel ID or address that are interested in navigating to. 

2) **Layer List:** Toggle on/off information displayed on the map. 

3) **Measurement:** Measure a linear or areal feature  

4) **Sketch:** Draw shapes on the map. 

5) **Print:** Export a digital file for printing or saving to your device. 

6) **Zoom:** Zoom in and out on the map  

The Imagery Slider

- Click and drag the ○ to explore aerial photography from a year of interest.
- If the ○ is between two years, the image transparency is adjusted dynamically to simulate change visualization
- The image transparency is reported in the upper right-hand corner of the window.
- Click the >> to toggle on the topographic basemap,



Historical Aerial Photography Application



APPLICATION USAGE GUIDE
(DRAFTED 1-24-22)

Contact Information:

For GIS application support, contact our GIS department:

chatham.gis@chathamcountync.gov

919-545-8473